



19 Catlin Street

Hemel Hempstead, HP3 9AU

£580,000

Exceptional Space, Character & Superb Value – Over 1,700 sq ft

This deceptively spacious three-bedroom mid-terrace Victorian cottage offers over 1,700 sq ft of accommodation, making it one of the largest homes of its type in the area — and outstanding value for money.

Originally a public house, the property retains a sense of history and character while benefiting from thoughtful modern extensions across both the ground and first floors. The result is a rare combination of period charm and generous, family-sized proportions.

The ground floor features a welcoming lounge and a large kitchen/diner, ideal for entertaining and everyday family life. Upstairs, there are three well-proportioned double bedrooms and a spacious family bathroom, ensuring comfort and flexibility for all. A useful cellar provides excellent storage or further potential.

Perfectly positioned, the property is within walking distance of Hemel Hempstead station, offering easy access for commuters, along with local shops, parks, and amenities.

Homes offering this level of space, history, and value are rarely available — making this a truly unique opportunity in a sought-after location.

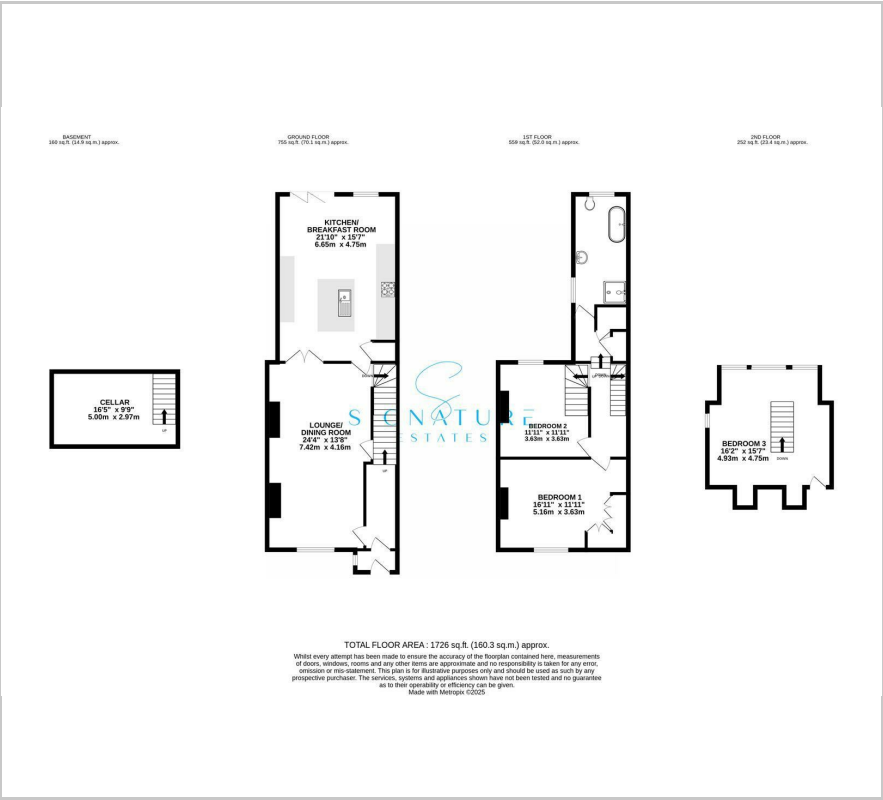
Viewing

Please contact our Bovingdon Office on 01923262666 if you wish to arrange a viewing appointment for this property or require further information.

- Over 1700 sq ft Of Accommodation
- Substantial Victorian Home
- Extended Across The Ground Floor, First Floor and Loft Conversion
- Generous Kitchen/Diner
- Three Double Bedrooms
- Walking Distance To Hemel Hempstead Station
- Cellar For Additional Storage
- Offered Chain Free



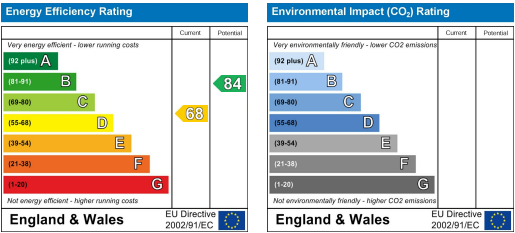
Floor Plan



Area Map



Energy Efficiency Graph



These particulars, whilst believed to be accurate are set out as a general outline only for guidance and do not constitute any part of an offer or contract. Intending purchasers should not rely on them as statements of representation of fact, but must satisfy themselves by inspection or otherwise as to their accuracy. No person in this firm's employment has the authority to make or give any representation or warranty in respect of the property.